



## 3/6-10 Ruby Road GYMEA NSW

3 2 2

Situated in a quiet street, this oversized townhouse offers a versatile floor plan and a massive 298sqm on title. Features are:

- Stunning kitchen with Caesarstone benchtops, soft close doors & dishwasher
- 3 well proportioned bedrooms (master with ensuite and walk-in robe)
- Open plan lounge/dining with high ceilings
- Split system air conditioning, ceiling fans in bedrooms
- Storage under stairwell
- Double auto lock up garage with internal access
- Large private wraparound courtyard
- Pet friendly complex
- Close to schools, shopping centre, golf course, ovals &

**Type** : Townhouse

**View** : <https://www.burkeproperty.com.au/7403873>

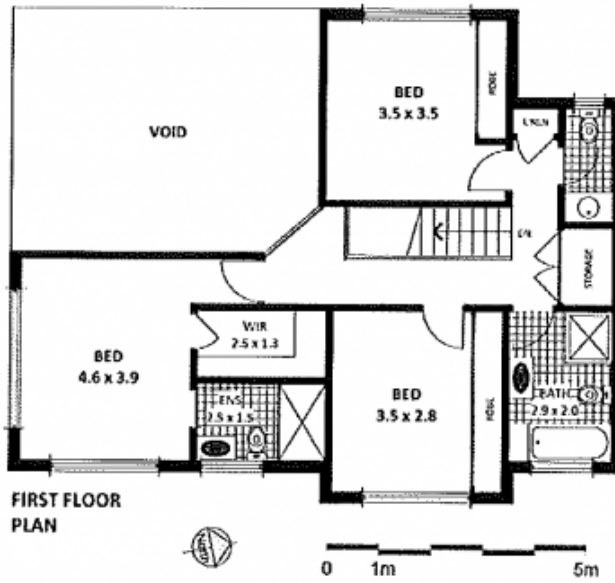


**David Kennedy**  
02 9544 1111

[For full version visit the website](https://www.burkeproperty.com.au)

3 / 6-10 Ruby Rd  
Gymea NSW 2227

GROUND FLOOR AREA (incl. drg. garage) - 100 m<sup>2</sup>  
FIRST FLOOR AREA - 70 m<sup>2</sup>  
VERANDAH - 14.5 m<sup>2</sup>  
PATIO - 4.3 m<sup>2</sup>



This plan is for illustrative purposes only. Dimensions are approximate and do not constitute part of any legal document or contract. For the full offer, please refer to the contract for sale of the property.

