



22 Caringbah Road WOOLLOOWARE NSW

6 2 2

A unique property offering spacious accommodation for all the family in the popular Cronulla/Woollooware area.

Upstairs featuring 4 bedrooms, main bathroom & 2nd separate toilet. Kitchen overlooking sundrenched living & dining. Downstairs is a two bedroom self-contained residence with its own fully functional kitchen, bathroom & spacious living. Ideal for in-law, teenager or visitors accommodation.

The rear garden boasting a sparkling in ground pool and outdoor entertaining area.

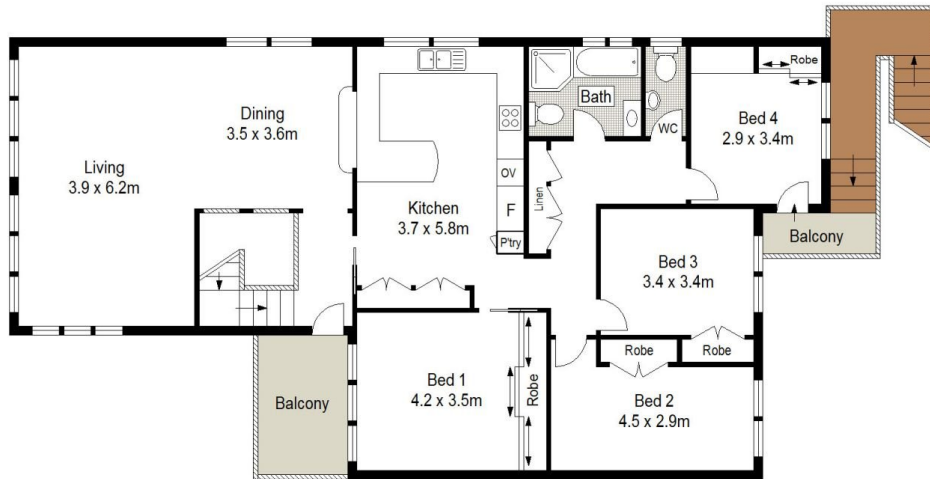
Two lock up garages and plenty of off street parking for the boat & caravan.

Type : House
Land Size : 607 sqm
View : <https://www.burkeproperty.com.au/7404081>

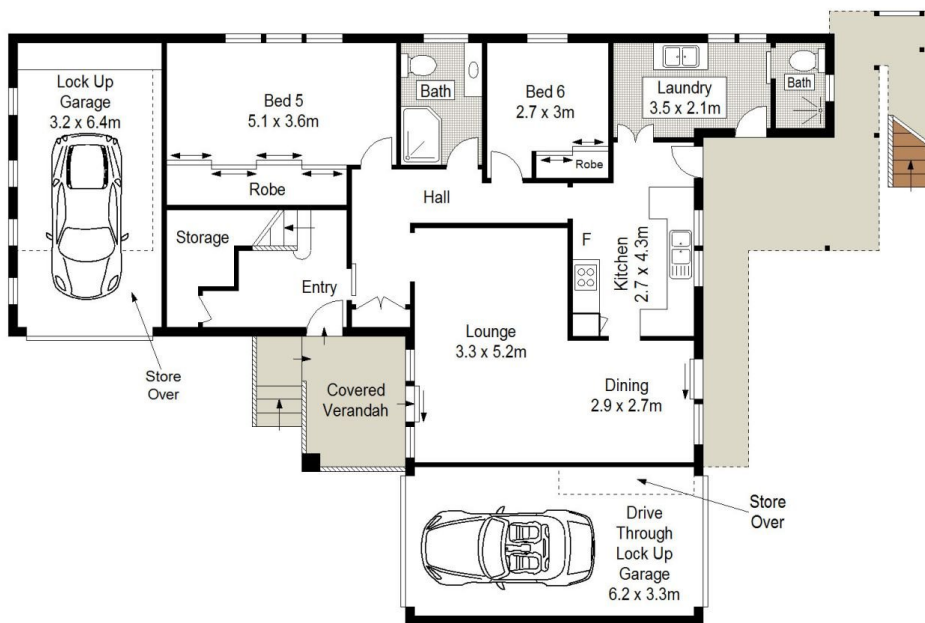


Martin Richardson
02 9544 1111

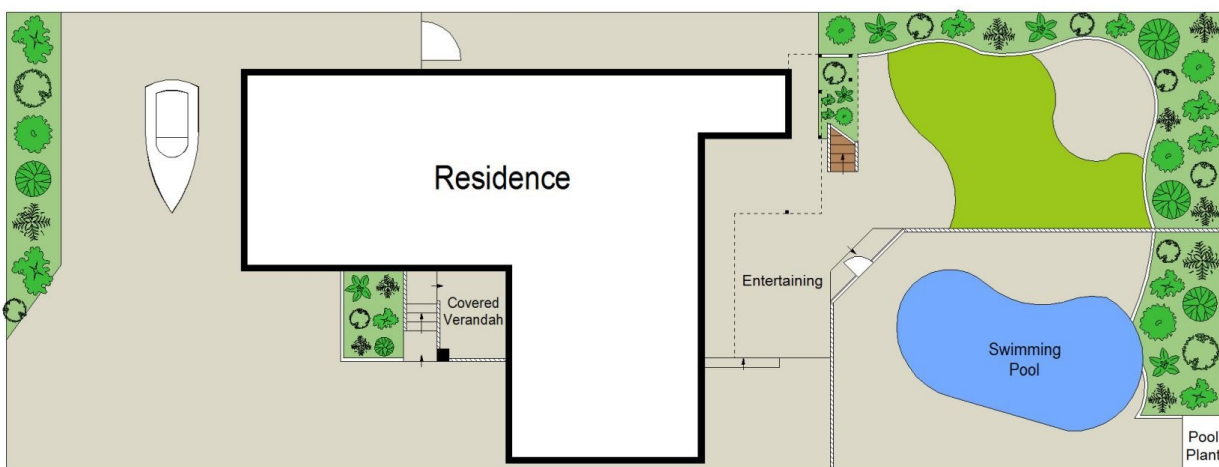
[For full version visit the website](https://www.burkeproperty.com.au)



FIRST FLOOR



GROUND FLOOR



0 1 2 3 4 5 SCALE IN METERS.

SITE PLAN (NOT TO SCALE)



Scale in metres. Indicative only. Dimensions are approximate. All information contained herein is gathered from sources we believe to be reliable. However we cannot guarantee its accuracy and interested persons should rely on their own enquiries.

22 Caringbah Road, Woolooware