



**12/88-92 Yathong Road CARINGBAH NSW**

3 2 2

Privately positioned in a quality complex, this north facing townhouse enjoys light-filled interiors, privacy and position.

Features are:

- 3 well proportioned bedrooms
- Master on ground floor with ensuite
- Modern kitchen with gas cooktop & dishwasher
- North facing courtyard
- Oversized double width garage with internal access
- Ample storage options
- Short stroll to shops, cafes, parks, schools and transport

Strata Levies \$548.50 per quarter (approximate)  
Council Rates \$269.00 per quarter (approximate)

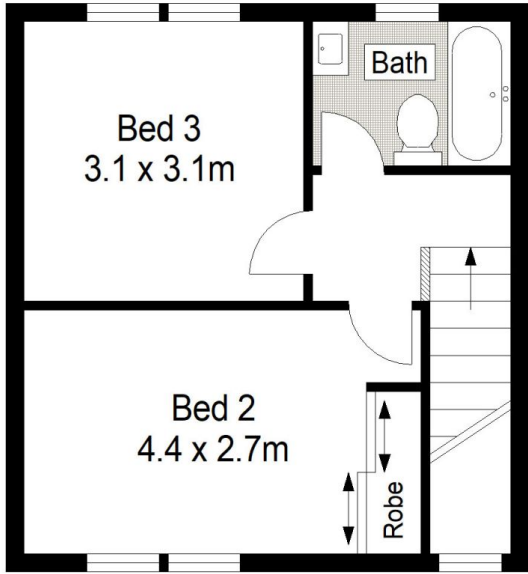
[For full version visit the website](https://www.burkeproperty.com.au/7404111)

**Type** : Townhouse

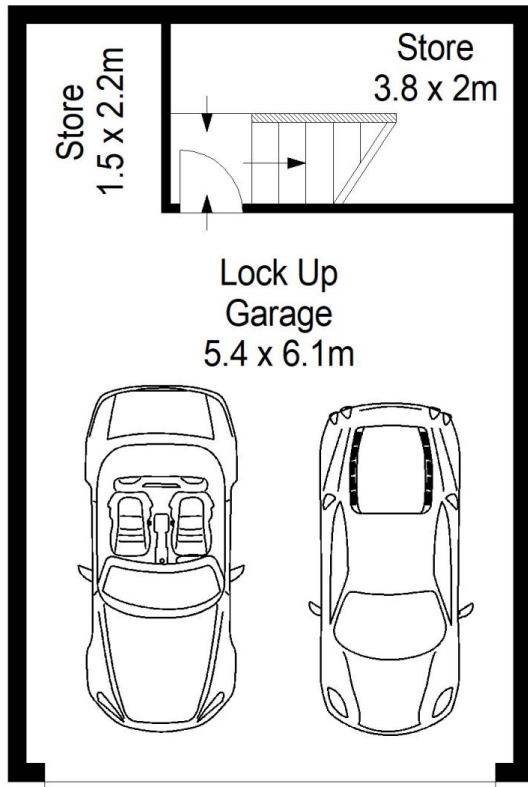
**View** : <https://www.burkeproperty.com.au/7404111>



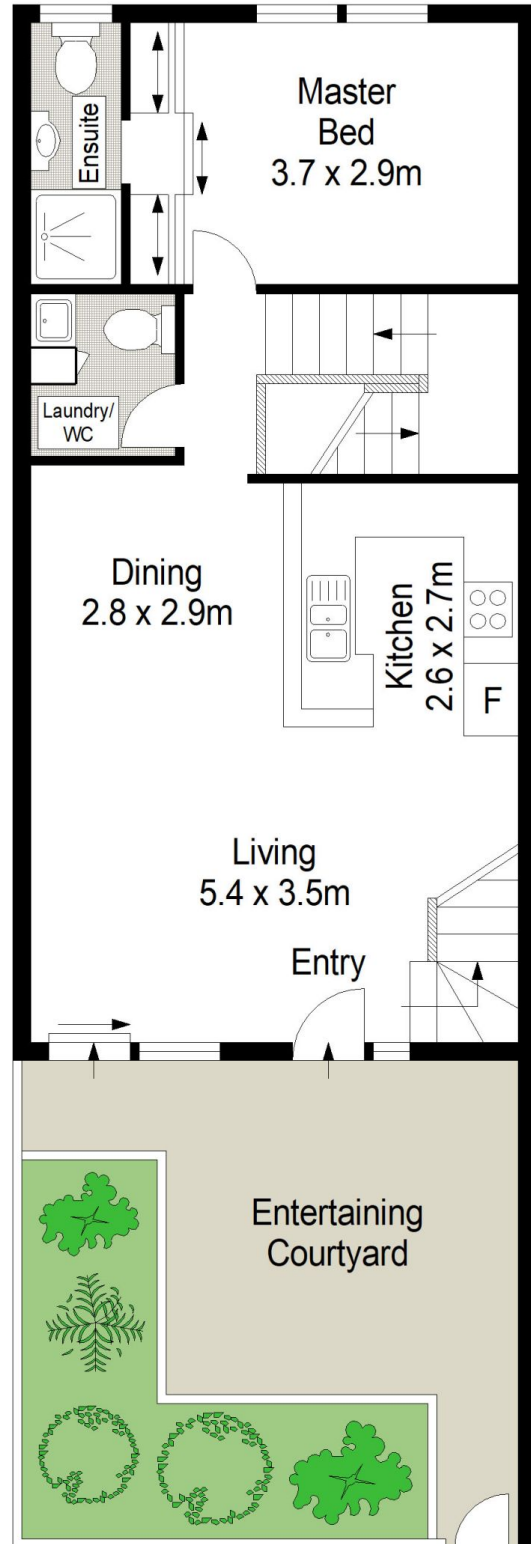
**David Kennedy**  
02 9544 1111



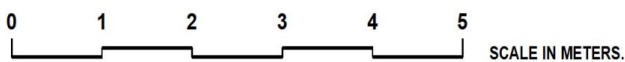
FIRST FLOOR



BASEMENT



GROUND FLOOR



Scale in metres. Indicative only. Dimensions are approximate. All information contained herein is gathered from sources we believe to be reliable. However we cannot guarantee its accuracy and interested persons should rely on their own enquiries.

