



13 Cordeaux Crescent SYLVANIA WATERS NSW

3 1 2

Located in a central, quiet and highly sought after position in Sylvania Waters, this single level brick residence oozes potential and is moments to village shops, transport, ovals and schools.

Features include:

- Impressive 581 sqm sundrenched north facing block
- Large open plan living space with separate dining room
- High ceilings throughout - separate sunroom
- 3 well proportioned bedrooms all with BIR's
- Large internal laundry with separate toilet
- Covered entertaining area
- Full size bathroom
- Timber kitchen with dishwasher

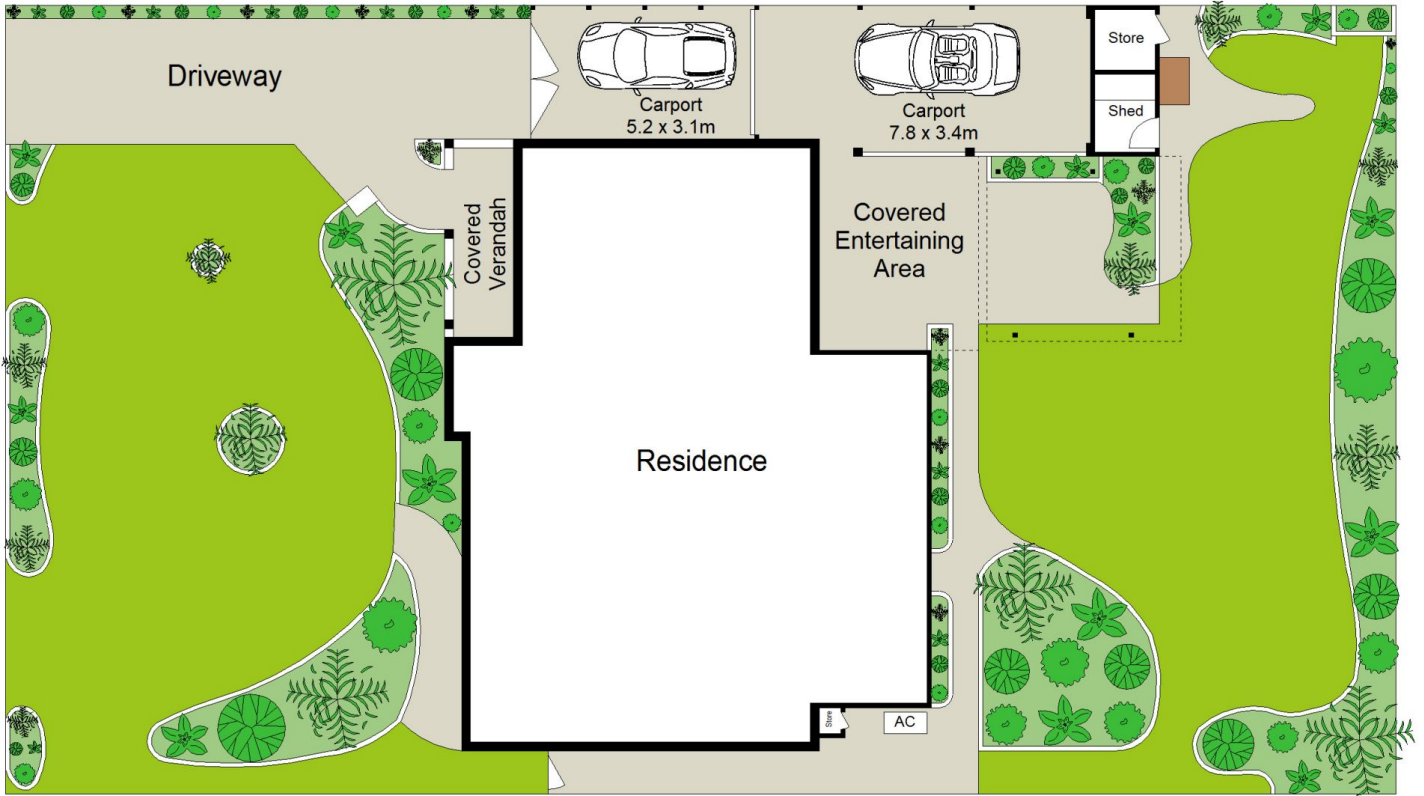
[For full version visit the website](https://www.burkeproperty.com.au/7404203)

Type : House

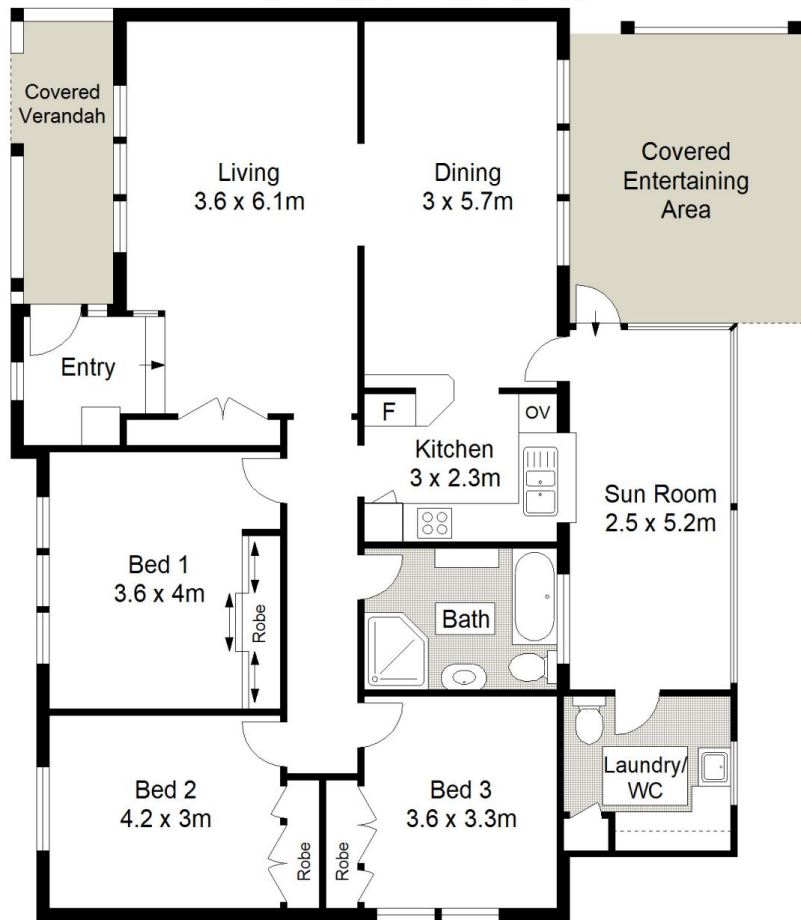
View : <https://www.burkeproperty.com.au/7404203>



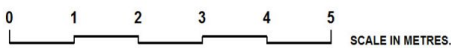
David Kennedy
02 9544 1111



SITE PLAN (NOT TO SCALE)



GROUND FLOOR



Scale in metres. Indicative only. Dimensions are approximate. All information contained herein is gathered from sources we believe to be reliable. However we cannot guarantee its accuracy and interested persons should rely on their own enquiries.

