



6/12-14 Kiara Road MIRANDA NSW

3  2  1 

Spacious 3 bedroom 2nd floor apartment conveniently located within walking distance to Westfields Shopping Centre and railway station.

**Type** : Unit

**View** : <https://www.burkeproperty.com.au/7404207>

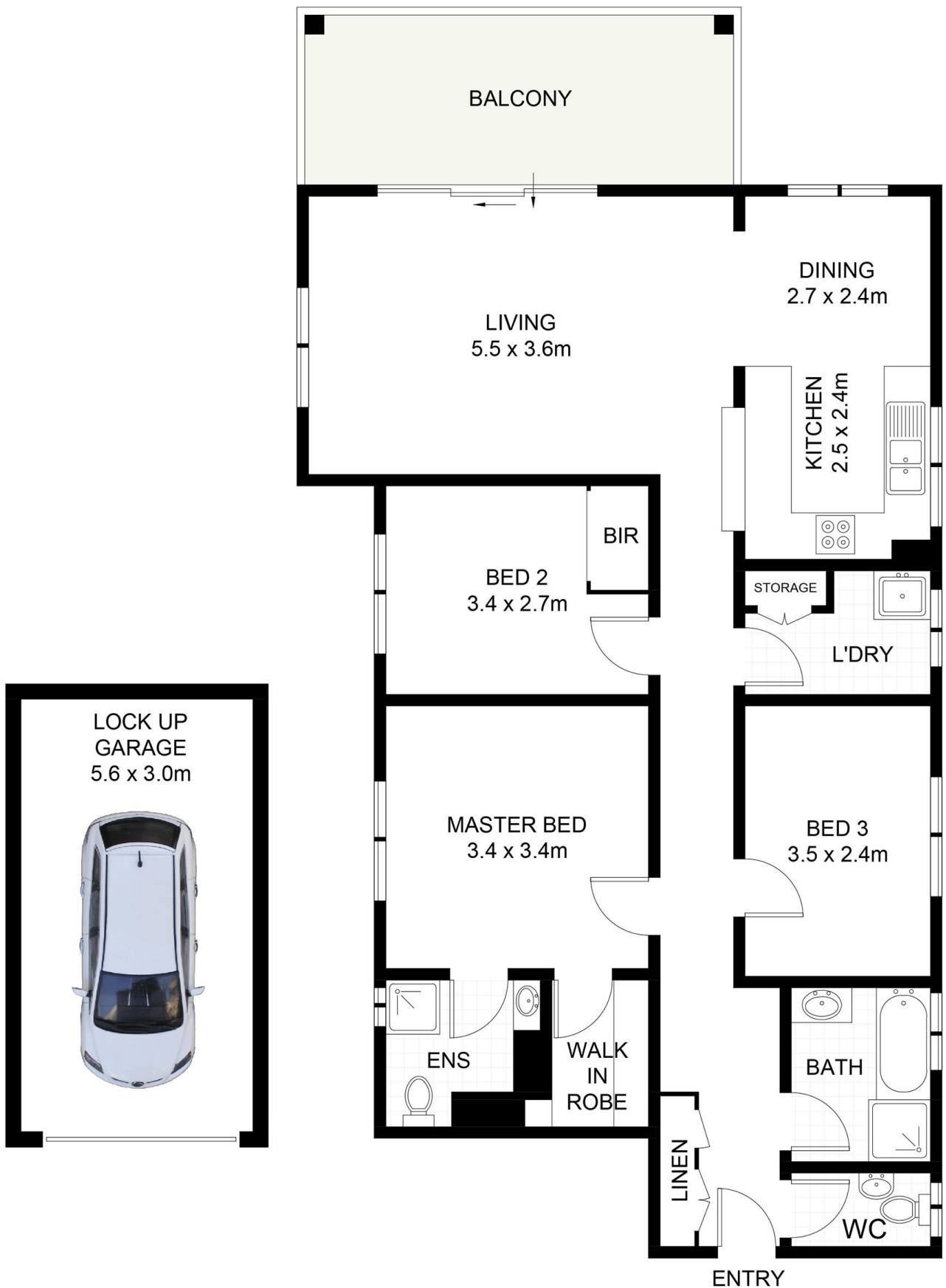
Features are:

- Three well proportioned bedrooms
- Master with walk-in robe and ensuite
- 2nd bedroom has built-in robe
- Living area flowing to tranquil balcony
- Modern kitchen with dining area
- Large bathroom with bath - separate toilet
- Internal laundry with storage
- Lock up garage



**Martin Richardson**  
02 9544 1111

[For full version visit the website](https://www.burkeproperty.com.au)



**GROUND FLOOR**

**FIRST FLOOR**



**6/12-14 Kiora Road, Miranda**

Scale in metres. Indicative only. Dimensions are approximate. All information contained herein is gathered from sources we believe to be reliable. However, we cannot guarantee its accuracy and interested persons should rely on their own enquiries.