



16 Jauncey Place HILLSDALE NSW

Outstanding offering to acquire a whole block of apartments to be sold in one line - this outstanding opportunity would be ideal for investors, SMSF buyers or developers.

Features are:

Easy access to Westfield Eastgardens, Maroubra beach, schools, Heffron Park and public transport
Only footsteps away from Southpoint Shopping Centre
Torrens Title with potential for Strata subdivision (S.T.C.A.)
Potential to value add and strong returns
Currently a mix of updated and original apartments
Each apartment has a car space
Land size 461sqm

[For full version visit the website](https://www.burkeproperty.com.au/7404213)

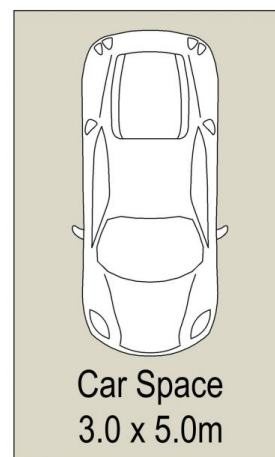
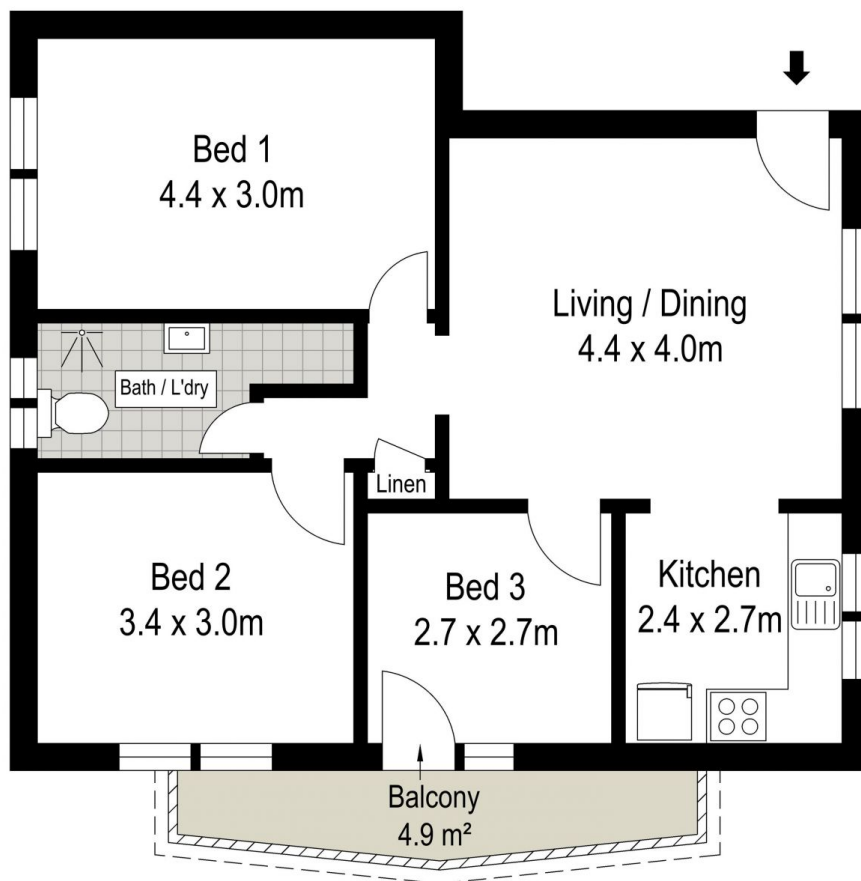
18 6 6

Type : Block of Units

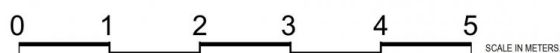
View : <https://www.burkeproperty.com.au/7404213>



David Kennedy
02 9544 1111



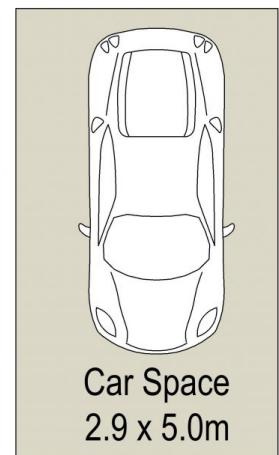
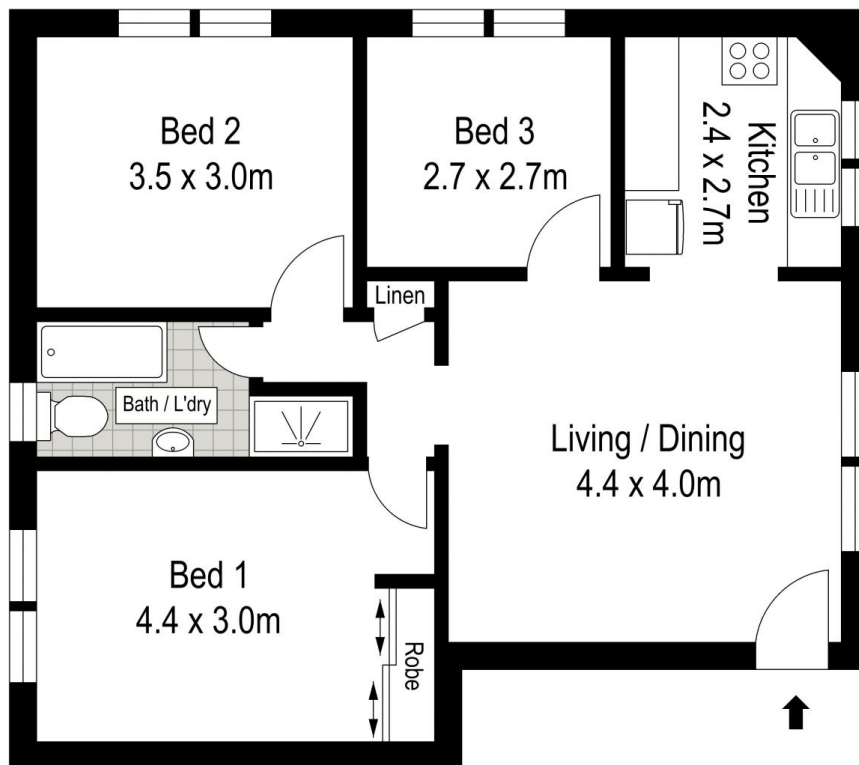
GROUND FLOOR



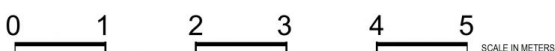
DISCLAIMER: THIS IS FOR ILLUSTRATIVE PURPOSES ONLY, ALL DIMENSIONS ARE APPROXIMATE AND IT DOES NOT CONSTITUTE PART OF ANY LEGAL DOCUMENTS.

1/16 Jauncey Place, Hillsdale

chris
Burke
& Company



GROUND FLOOR



DISCLAIMER: THIS IS FOR ILLUSTRATIVE PURPOSES ONLY, ALL DIMENSIONS ARE APPROXIMATE AND IT DOES NOT CONSTITUTE PART OF ANY LEGAL DOCUMENTS.

2/16 Jauncey Place, Hillsdale

chris
Burke
& Company